

# CERTIFICATE OF LOCATION OF GOVERNMENT CORNER

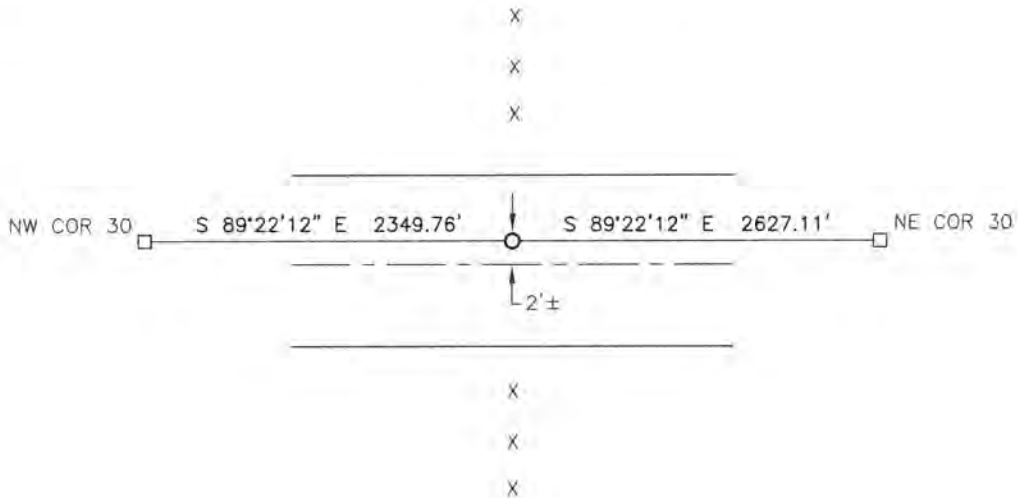
NORTH QUARTER Corner of Section 30, Township 108, Range 41, 5TH P.M.

STATE OF MINNESOTA, County of MURRAY

At the corner location shown on the sketch:

- On \_\_\_\_\_ found a \_\_\_\_\_  
DATE
- left monument as found,  lowered monument,  removed monument (explain)
- On 10/14/16 placed a 5/8" iron with seal #43844  
DATE

## SKETCH OF REFERENCE TIES



Minnesota State Plane Coordinate  
System Murray County Datum  
NAD83 (1996)  
N: 205797.606  
E: 487460.943

Statement of evidence relative to this corner location is on back of page.

I hereby certify that this document and the data contained herein was prepared by me or under my direct supervision

[Signature] 1/30/17  
SIGNATURE DATE

Registration No. 43844

- Land Surveyor,  Professional Engineer
- County Surveyor,  County Engineer

OFFICE OF THE COUNTY RECORDER

County of MURRAY

I hereby certify that this document was filed in the Co. Recorders office at 9:00 A.M on the 17<sup>TH</sup> day of FEBRUARY A.D. 2017

County Recorder Evelyn C. Larson

By \_\_\_\_\_, Deputy

DOCUMENT NO. \_\_\_\_\_

## Statement of Evidence

In September, 1861, L.G.M. Fletcher did the original subdivision of the township.

On July 17, 1909, J.W. Woolstencroft recorded distances between section corners.

On October 14, 2016, Bueltel-Moseng Land Surveying set a 5/8" iron with seal #43844 on line and at proportionate distances between the section corners. It is in line with fences to the north and south.